

Scutter

TB09-2516-RM



Smart + High precision production solution

Speed up to 150%

0 gap gear & rack

high end level
servo motor

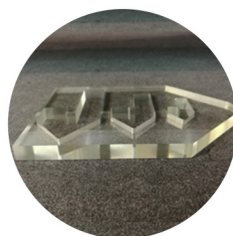
Ultra high strength
machine frame



Cut & Crease



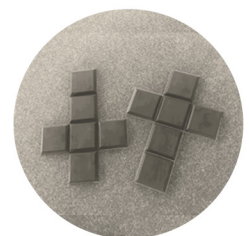
Piercing



Polishing



Kiss cut & Full cut



Grooving



Superior speed

Equipped with the international advanced high-performance motion controller, of which serial processing speed of code entry is almost 10-15 times than other controller, SCUTTER delivers higher production capability at an acceleration of 26, designed to create the best cutter in advertisement cutting market.



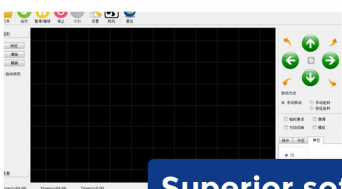
Superior precision

Latest cutting-edge techniques are used for the excellent SCUTTER workflow that yields superior precision up to 0.1mm of processing small circle, and it supports excellent-accuracy CNC cutting thanks to the high precision reducer of three archminutes.



Superior hardness

The difficulty in cutting complicated materials has been removed absolutely by SCUTTER designed with three head structure, which offers the solution most suited to handle high-density, high-precision, high-quality and shape complex materials applied crafts of double V-cut, wonderful relief carving etc.



Superior software system

The software interface is newly upgraded with more powerful functions. Upgraded beyond previous generation included industrial MES system, abundant materials library and QR auto position functions that allow to simplify workflow and lean production meaningfully.



Nine sets of servo drivers

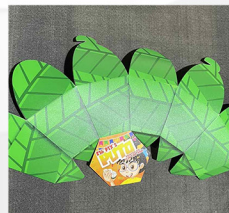
SCUTTER lead to increased overall productivity with maximizing performance using 9 sets of synchronous servo drivers.



Soft magnetic stick



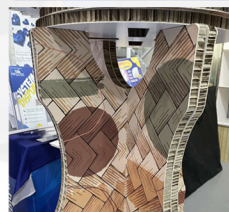
Sintra boards



C2S Paper



Acrylic



Honeycomb board



Corrugated board



KT board



Stickers / Vinyl

Specifications

max speed	1800mm/s
max acceleration	2G
repeat precision	±0.05mm
cutting precision	±0.05mm
max thickness	≤50mm
min circle dia	≥1mm
tool head module	5 modules includes 3 cutting tool head, plotting pen, CCD
optional	thorough cut, kiss cut, grooving, creasing, router, embossing, plotting, rotary
file format	PLT, DXF, PDF, XLS, EPS, CF2, AAMA, NC
transformat	LAN supports multi-port control
suction area	6 area
power	AC 380V 100KVA

Best partnered with

Mimaki
JFX200-2513 EX



Large Format UV Flatbed Inkjet Printer



Exclusively Distributed by:

MAKATI (HEAD OFFICE)

PANGASINAN

CEBU

CAGAYAN DE ORO

DAVAO



8837 Sampaloc St.,
San Antonio Village
Makati City 1203
Contact No.:
890-2657 ; 896-6698 ;
896-8488
+63 917 623 5986

By-Pass Road.,
Brgy. Sto. Domingo,
Urdaneta City
Province of Pangasinan
Contact No.:
+63 75 529 2367
+63 917 856 7255

163 Sikatuna corner
Jakosalem St.,
Brgy., Zapatera Cebu City
Contact No.:
(032) 412-5661

Goking Bldg., San Pedro St.,
Gusa, Cagayan De Oro
Contact No.:
(088) 885 0410
+63 917 713 6083

Dasi Compound Water
District, Bajada, Davao City
Contact No.:
+63 82 222 0921
+63 917 539 1104